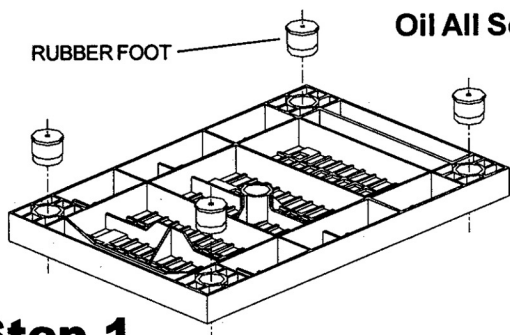
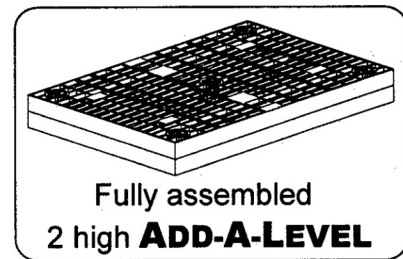


# ADD-A-LEVEL™

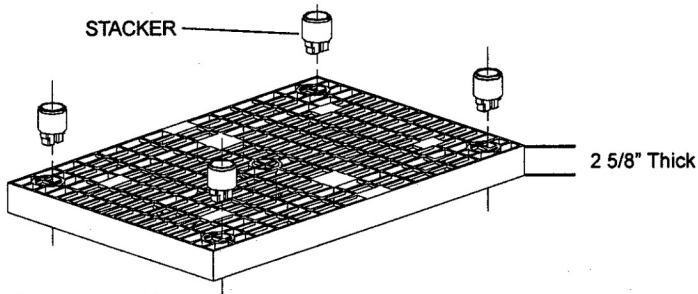
## ASSEMBLY INSTRUCTIONS

Oil All Sockets Before Assembly



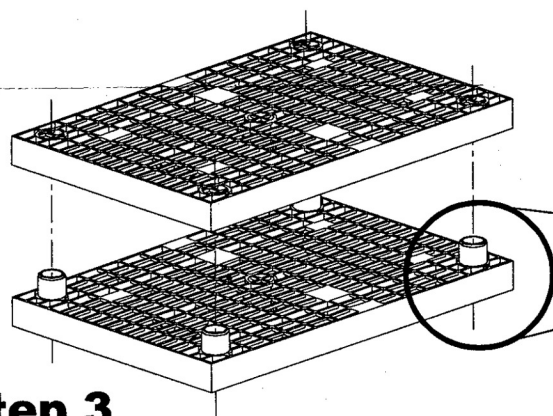
### Step 1

Invert platform and insert rubber feet.



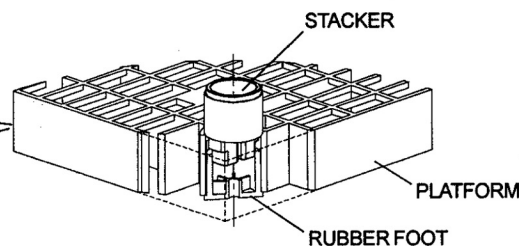
### Step 2

Set panel upright and insert stackers in sockets as shown.



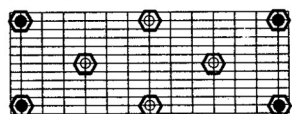
### Step 3

Align upper level platform and lower level stackers. Push upper platform all the way down over stackers. Repeat steps for multi-level configurations.

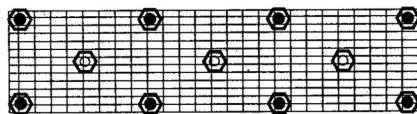


Cut Away View of Socket

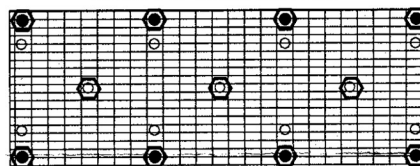
#### 2x5.5 Platform



#### 2x8 Platform



#### 3x8 Platform



#### Instructions:

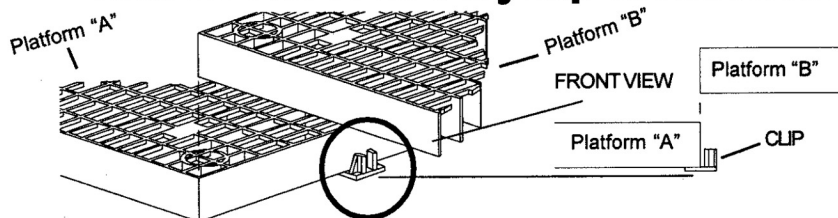
Follow steps 1 through 3 inserting stackers and rubber feet in sockets as shown. Repeat steps for multi-level configurations.

Legend: ● STACKER AND RUBBER FOOT  
○ RUBBER FOOT

### ADD-A-LEVEL w/ PolyClip Instructions

#### Disassembly Instructions

Larger platforms should be disassembled before moving. Proper lubrication of the sockets during assembly, dramatically help the process of disassembly. Separate panels equally by pulling apart the panels in small increments at the stackers until they are free.



### Step 1

Position clip on outside edge and inside rib as shown.

### Step 2

Align Platform B and set down on clip using the outside edge and inside rib.